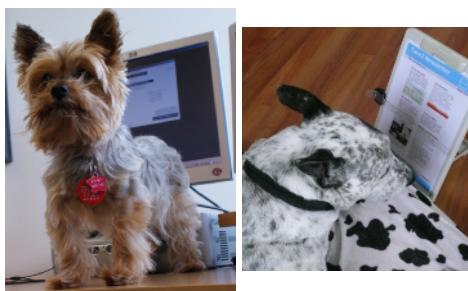


Dogs of Take2

We are proud to present several new photos featuring “Dogs of Take2”. On the left is *Sue* and, on the right, *Toby*. Both of Learning Post in Auckland.



There are more dogs to come, so watch this space.

SQL Server 2000 Support

As originally notified in August 2008 we are no longer able to support the SQL Server edition of Take2 running in a SQL Server 2000 environment.

If you have not yet moved to SQL Server 2005 or 2008 please contact the Help Desk so that we can discuss your options for ongoing support.

ERS Access Problems

Over the past few weeks we have identified a possible problem for clients regarding access to ERS. We have worked with TEC to diagnose the problem.

The root cause of this problem is that some clients are working on operating systems using out-of-date security certifications. It seems to be that there are no issues for those users who have continued to apply the latest security updates to their operating systems.

Neither Meta Office nor TEC has the capacity to remedy technical problems of this type, but we are of course able to work with you to identify whether this is indeed the problem if you are having difficulties with the ERS. If so, then you will need to get your IT staff/contractor to bring your system up to date.

Version 10.2

Take2 has been certified by the Ministry of Education for 2010. We had originally planned to release a new version with 2010 SDR functionality in the New Year but, thanks to our wonderful senior programmer, we can make the release before Christmas. This will be designated as version 10.2 and it will do SDRs in the correct format for 2008, 2009, and 2010 depending on the return year you enter. A release notice for version 10.2 will be sent out in the next week.

An Update on T2P

T2P (Take2 Powered by PEPi Systems) is being supplied to a number of existing users from early 2010. We are currently going through the analysis and deployment process with these clients.

As we have previously indicated Meta Office will continue to support Take2 for a period of two years after T2P is fully available. By “fully available” we mean that T2P has all required New Zealand functionality including some fairly obscure bits that would not affect most clients. Current indications are that this will be late 2010 and so support will continue through 2012.

That said, the level of ongoing maintenance on the Take2 product will be limited to that required to meet ongoing compliance requirements. We have already ceased accepting any projects to provide bespoke functionality relating to Take2.

All Take2 users will receive a detailed communication in the next few weeks with full information about future support, upgrade options, and pricing.

Christmas

Normal Help Desk hours will apply through to 24 December and from 4 January. We are closed on Public Holidays but between 28 and 31 December you can leave a message on the Help Desk answerphone and we will get back to you within 24 hours.

We wish all our readers a pleasant and restful break.

Reporting Assessment Results to NZQA

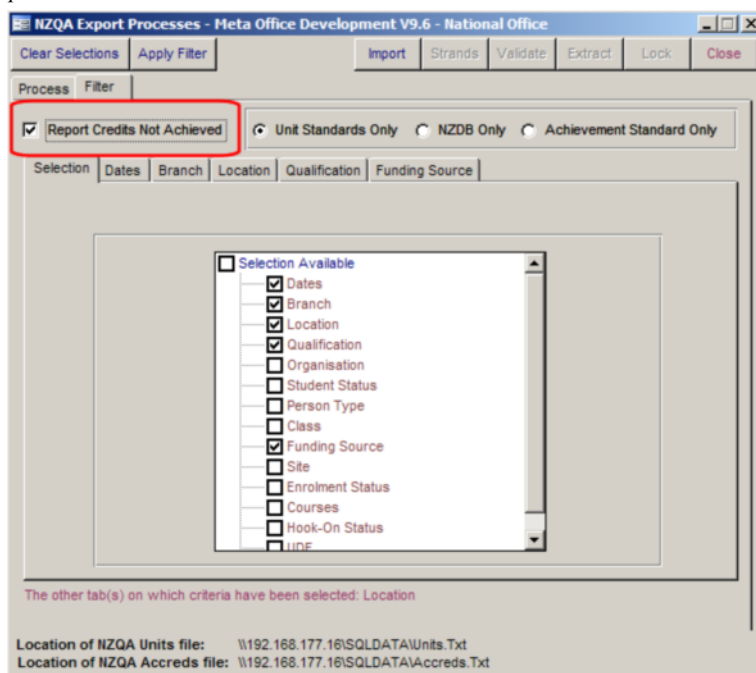
A number of our clients have drawn our attention to a recent memo from TEC, the Ministry of Education and NZQA. The memo was sent to secondary school principals and relates to reporting assessments to NZQA for STAR and Gateway students. The memo is undated but we assume that it was sent out in the last month.

It is an interesting memo for several reasons.

- If you have STAR and Gateway students you are now required to report “Not Achieved” outcomes to NZQA.
- This will cost you \$1.55 per credit until 2011 at the earliest. So much for low compliance costs!
- The three agencies apparently didn’t see fit to talk to you, the providers, about the change and they certainly didn’t talk to us. So much for high trust.

Anyhow we have learned to live with this type of behaviour over the years and so from the next release of Take2, version 10.2, provision is made to report “Not Achieved” outcomes and here’s how it works.

1. Enrol the student into the Unit Standards for which they are to be assessed.
2. If the student achieves the Unit, record this in the usual way by entering a date of completion which puts a tick in the *Complete* and *Assessed* fields and changes the *Status* to “R”.
3. If the student is assessed but does not achieve the Unit, put a tick in the *Assessed* field and change the *Status* to “R”.
4. When reporting outcomes from the Administration Module use the *Funding Source* field to filter for STAR funding.
5. Tick the new option *Report Credits Not Achieved* on the *Filter* tab.



6. Continue processing in the usual way.
7. The audit report will show all reported records – i.e. achieved and not achieved.

Confidentiality

We note with some concern the development of a “confidentiality culture” within certain agencies. Consultation documents are being distributed and described as “sensitive” and with a requirement that they are treated as confidential.

But why? The material in question is hardly a blueprint for an Iranian reactor. Indeed it is something that should be in the public domain

from the very beginning if the consultation is genuine. And that, it seems, is the real issue. This is not a real consultation when those consulted about a highly complex 80 page document are given just a week to get back and can’t talk to others to obtain advice.

This is the type of ersatz consultation that is all too familiar and which, as we know, means that the agency concerned is going to go ahead and do what it wants anyway. Now who does that remind us of?

To unsubscribe from this Newsletter, please send an email to unsubscribenewsletter@meta-office.com with the word ‘unsubscribe’ in the subject line.