

Setting up SMS Messaging in Take2

Access to the SMS Text Messaging functionality requires:

- Installation of a new Take2 front end – version 8.4.6 or higher
- Attaching the GSM router on the server
- Installation of the Take2 SMS server-side application

Handset/Modem Requirements

If you wish you may source your own phone/modem. We recommend that you use a Vodafone GSM compatible (for NZ market) device. The advantage of doing so is that GSM uses a SIM card that can be exchanged in and out of the phone/modem and it does not require a fixed account. To use the Telecom CDMA network we will require your phone/modem (already connected to the CDMA network) for testing. Any phone/device must have:

- A RS-232 serial interface.
- A Serial Cable for GSM/CDMA connection.
- Be OpenAT capable.
- Be SMS (text and PDU modes) compatible.
- Be supplied with relevant documentation (user manual and AT command set documentation).

If you opt for Telecom CDMA we will definitely need your phone and its documentation for testing purposes. If you opt for Vodafone GSM we may need your phone and its documentation for testing purposes.

Downloading the Update

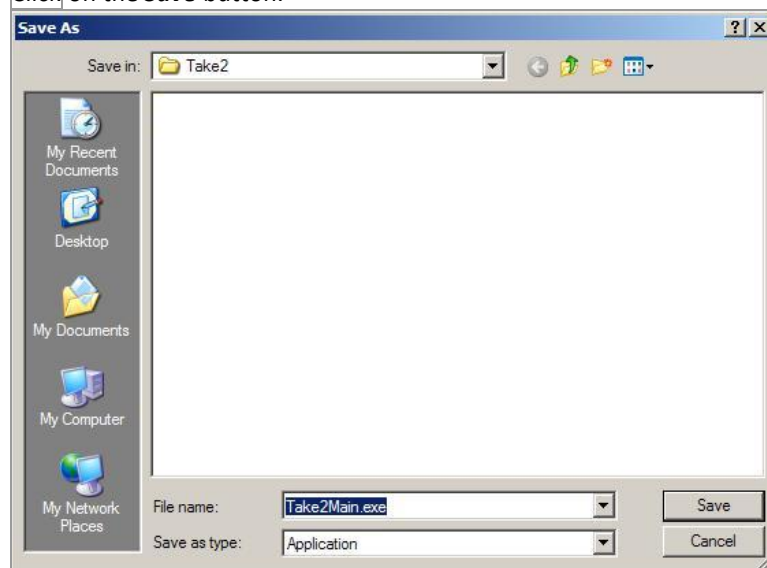
1. on the **Take2 Student Management** button in the Main module.



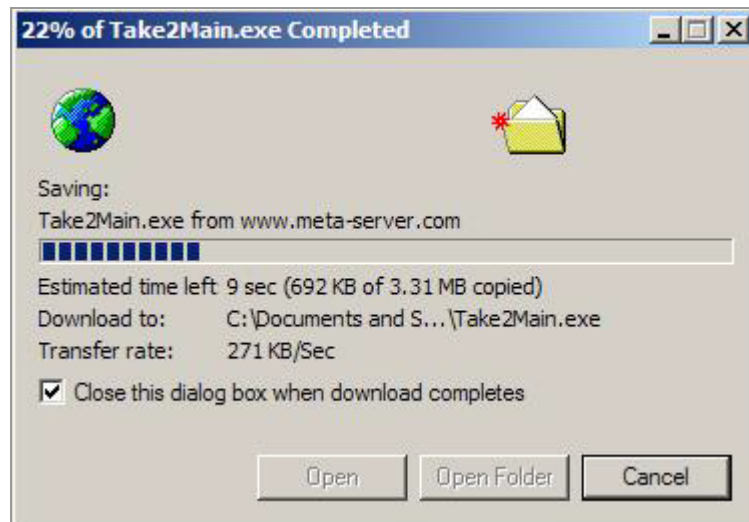
2. on the **Additional Functionality** button.
3. on the **Check for Updates** button.
4. on the **Next** button.



5. If the (v8.4.6 or higher required) update is ready for download the **Update** button will become available.
6. on the **Update** button.
7. on the **Download** button.
8. on the **Save** button.



9. Specify a location to save the update file. Make sure that you can find the file again!
10. on the **Save** button.



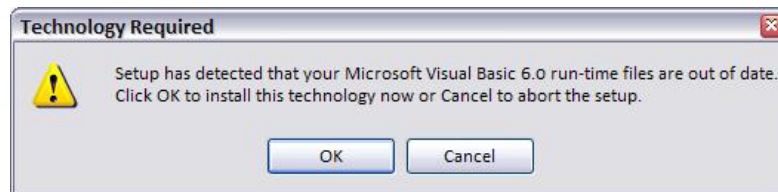
11. Wait for the update to finish downloading.
12. Once the download is complete, apply this updated front end.

Attaching the modem to the server

Connect the modem to your server's serial port. A USB adaptor can be purchased separately if there is no available serial port.

Installing the server side application

1. Double-Click on the **Setup** program that has been emailed to you.
2. If the Visual Basic 6 run-time files are not installed you will be prompted to install these. Click on the **OK** button to install.



3. Follow the on-screen instructions to install the Take2 SMS application.

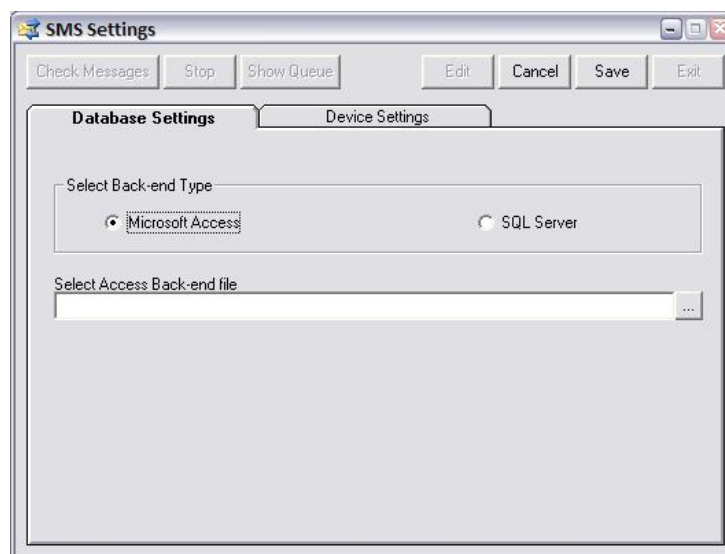


4. Ensure the Take2 SMS application is running on the server.



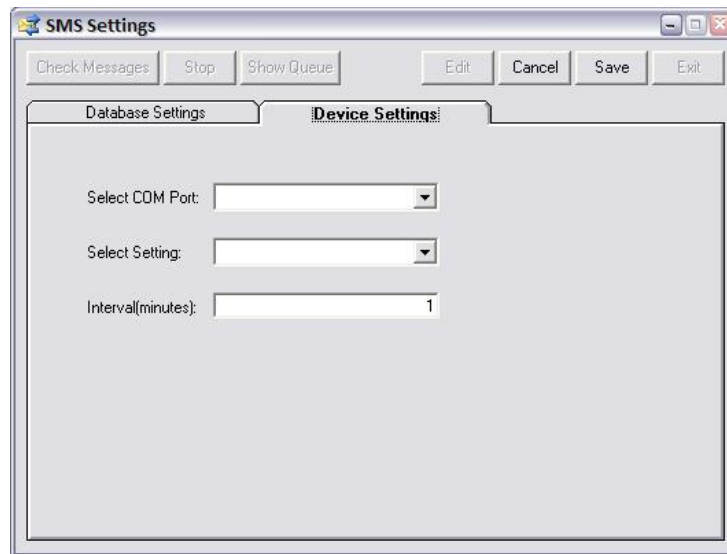
Configuring the server side application

1. Click on the **Edit** button.
2. Click on the **Database Settings** tab.
3. Select the Back-end Type



4. Select the Access data file or configure the login correct settings for SQL Server.

5. **Click** on the **Device Settings** tab.
6. Configure the COM port and settings appropriate to your server/computer. Please contact the helpdesk if you require assistance setting these.



7. Enter the desired send interval.
8. **Click** on the **Save** button.
9. **Click** on the **Check Messages** button to allow the modem to check queued messages stored in Take2.